

IOWA DEPARTMENT OF NATURAL RESOURCES
LAND & WATERS BUREAU
WALLACE STATE OFFICE BUILDING

ADDENDUM No.1

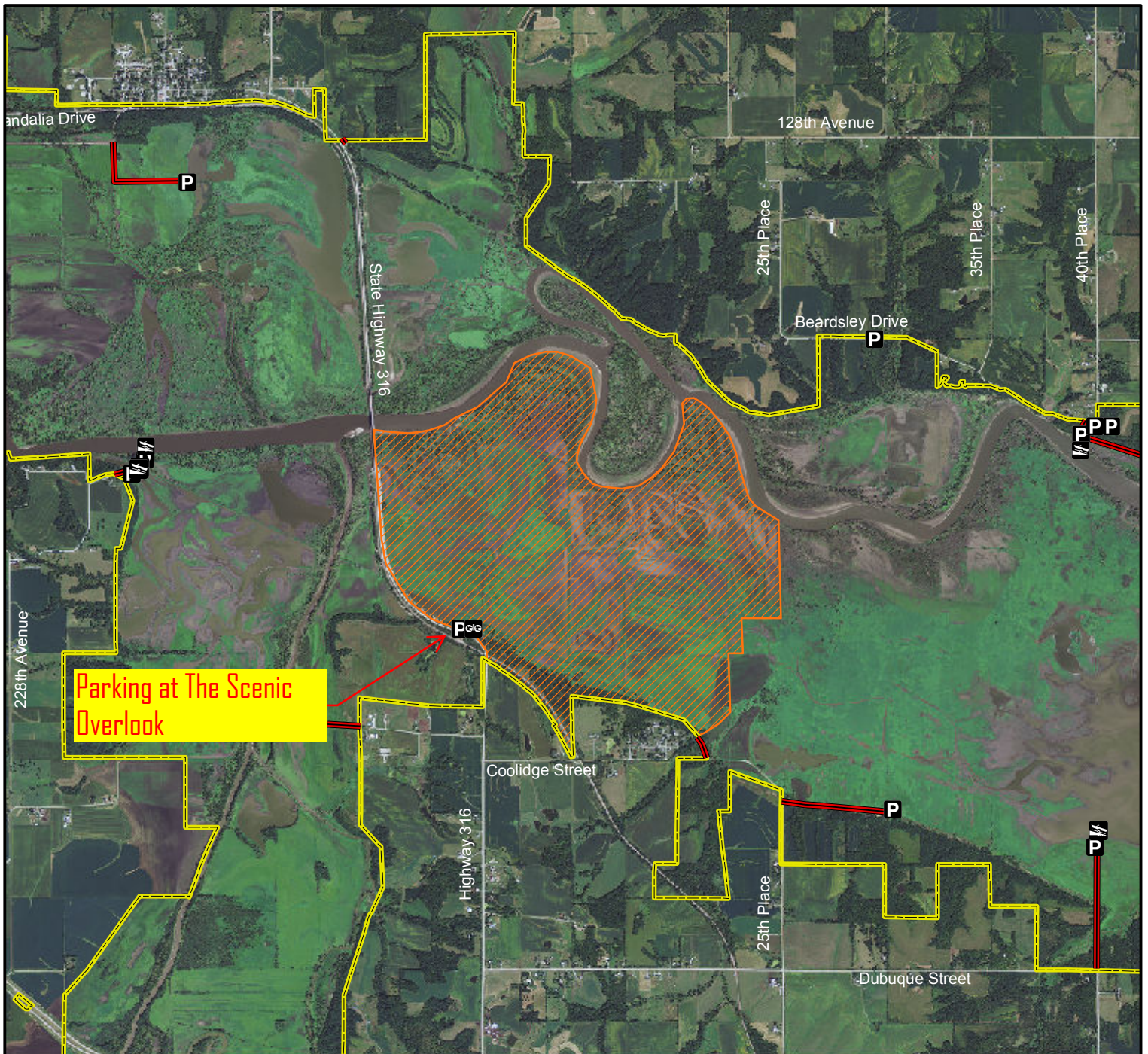
RED ROCK WILDLIFE MGT
SWAN REFUGE AREA DIKES REPAIRS
MARION CO.IOWA
PROJECT NO. 17-05-63-03
BID DATE: OCTOBER 19, 2017
ISSUE DATE: OCTOBER 4, 2017

This Addendum is issued to modify, explain or correct the original Drawings and Specifications, and is hereby made a part of the Contract Documents. Please attach this Addendum to the Project Manual in your possession. Insert the number and issue date of this Addendum in the blank space provided on the Bid Form.

Bidding Requirements:

1. A non-mandatory pre bid meeting is scheduled on **Friday, October 13th** at **10.00 A.M** at Swan Refuge. See attached Map for Location.

Red Rock Wildlife Management Area - WC



Legend

State Areas open to hunting

WMA Boundary

Refuge

Parking Lot

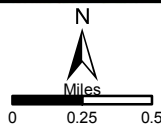
Boat Ramp

Scenic Overlook

Access Road

2011 Aerial Photography

Map Creation Date: 9/2014



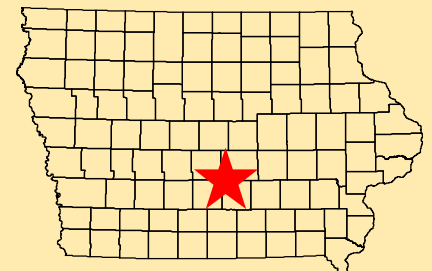
Acres: 31,123

Habitat: 1/4 Marsh & Lake,
1/4 Timber, 1/2 Upland

Species: Deer, Squirrel, Pheasant,
Waterfowl, Dove

Contact: Todd Gosselink
Red Rock Wildlife Unit
515-238-6936

Jasper, Marion,
Polk & Warren Counties, Iowa



Directions: N Access - 3.5 miles S of Monroe
on Hwy 14, 7 miles W on
Carpenter St. S Access - 4 miles
N of Pleasantville on 40th Ave.

Every effort has been made to accurately depict the boundaries on this map. However, users should rely on boundary signs actually located in this area to ensure they do not trespass on private property.